

Certification Scheme

Certification scheme for certification of glass products as construction products as mentioned in the Construction Products Regulation (EU) No 315/2011 (CPR)

Short name	CertiScheme-Glass
Date	19-10-2021
Document number	4.2.4-P.02-GLS-IN005

Number of pages 13

All rights reserved.

© 2010 TÜV Rheinland Nederland B.V.

Headoffice:

Boogschutterstraat 11A
P.O. Box 541
7300 AM Apeldoorn
Tel. +31 (0)88 888 7 888
Fax +31 (0)88 888 7 879

Locations:

Vissenstraat 6
P.O. Box 541
7324 AL Apeldoorn
Tel. +31 (0)88 888 7 888
Fax +31 (0)88 888 7 879

Eiberkamp 10
P.O. Box 37
9350 AA Leek
Tel. +31 (0)88 888 7 888
Fax: +31 (0)594 504 804

Josink Esweg 10
P.O. Box 337
7500 AH Enschede
Tel. +31 (0)88 888 7 888
Fax +31 (0)88 888 7 859

TÜV Rheinland Nederland B.V. is a registered company at the Dutch Chamber of Commerce under number 27288788
info@nl.tuv.com
www.tuv.com/nl

Contents

1 Introduction	3
1.1 Purpose	3
1.2 Ownership	3
1.3 Certification agreement documents	3
1.4 Changes in the certification scheme	3
1.5 Notifications and accreditations	3
2 Certification scheme	4
2.1 Scope	4
2.2 Normative and other references	4
2.3 Terms and Definitions	4
3 Requirements and Application	6
3.1 Requirements	6
3.2 Application	6
4 Certification process	7
4.1 Initial Audit/Factory inspection	7
4.2 Initial Type Testing (determination of the product-type)	7
4.3 Evaluation	7
4.4 Decision on certification	7
4.4.1 Granting	7
4.4.2 Maintaining	7
4.4.3 Extending	8
4.4.4 Reducing	8
4.4.5 Suspending	8
4.4.6 Withdrawing	8
4.5 Resolving non-conformities	8
4.6 Resolving remarks	8
4.7 Publication of certified products	8
4.8 Results from parties outside the contractual control of TÜV Rheinland	9
4.9 Issuing the certificate	9
4.10 Surveillance	9
Annex A: Systematic scheme diagram	10
Annex B: Example of a certificate for AVCP system 1 product	12
Annex C: Example of a certificate for AVCP system 3 product	13

1 Introduction

1.1 Purpose

This certification scheme has the purpose to give manufacturers the possibility for getting their products certified. For glass as construction product this can be mandatory or voluntary certification. Mandatory in the case that the manufacturer wants to give fire resistant or bullet resistant or explosion resistant properties to his product. Voluntary in all other cases.

1.2 Ownership

TÜV Rheinland Nederland B.V. is the owner of this certification scheme.

1.3 Certification agreement documents

This Certification Scheme is, together with the Certification Agreement (contract between the Applicant and TÜV Rheinland Nederland B.V.) and the 'General Terms and Conditions for Advisory, Research and Certification' an integral part of the Certification agreement documents.

1.4 Changes in the certification scheme

Changes in the certification scheme will come into force after determination of the scheme by the College of Advice (College van Advies) TÜV Rheinland Nederland B.V. TÜV Rheinland Nederland B.V. will take care of distribution under all interesting parties of the changes and the date they will come into force.

1.5 Notifications and accreditations

TÜV Rheinland Nederland B.V. has been notified by the Dutch Minister for Housing and the Central Government Sector as Notified (Factory Production Control) Certification Body (number 0336) for the European Construction Products Regulation 305/2011 (EU).

TÜV Rheinland Nederland B.V. has been accredited by the Dutch Accreditation Council (RvA) as ISO 17025 Test Laboratory (accreditation number L484) and ISO 17065 Certification Body (accreditation number C078). The RvA is signatory of the international ILAC-MRA arrangements for laboratory and inspection accreditation and IAF arrangements for management systems, products, services, personnel and other similar programs of conformity assessment for global recognition. For the actual scope please visit www.rva.nl and enter accreditation number

2 Certification scheme

2.1 Scope

This certification scheme is applicable to glass products as used for construction works as meant in the Construction Products Regulation as in force from 1 July 2013, both for AVCP system 1: glass with fire or bullet or explosion resistant properties (mandatory certification) and AVCP system 3 (voluntary certification).

2.2 Normative and other references

The following referenced documents are indispensable for the application of this certification scheme. For dated references only the edition cited applies.

- Regulation (EU) No 305/2011 of the European Parliament and of the Council of 9 March 2011 (the CPR), laying down harmonised conditions for the marketing of construction products and repealing Council Directive 89/106/EEC (the CPD);
- Commission Decision 2000/245/EC of 2 February 2000 on the procedure for attesting the conformity of construction products pursuant to Article 20(4) of Council Directive 89/106/EEC as regards flat glass, profiled glass and glass block products;
- EN 356, Glass in building - Security glazing - Testing and classification of resistance against manual attack;
- EN 572-9, Glass in building - Basic soda lime silicate glass products;
- EN 1036-2, Glass in building - Mirrors from silver-coated float glass for internal use;
- EN 1096-4, Glass in building - Coated glass;
- EN 1279-5, Glass in building - Insulating glass units;
- EN 1863-2, Glass in building - Heat strengthened soda lime silicate glass;
- EN 12150-2, Glass in building - Thermally toughened soda lime silicate safety glass;
- EN 12337-2, Glass in building - Chemically strengthened basic soda lime silicate glass;
- EN 12600, Glass in building - Pendulum test - Impact test method and classification for flat glass;
- EN 13024-2, Glass in building - Thermally toughened borosilicate safety glass;
- EN 14179-2, Glass in building - Heat soaked thermally toughened soda lime silicate safety glass;
- EN 14321-2, Glass in building - Thermally toughened alkaline earth silicate safety glass;
- EN 14449, Glass in building - Laminated glass and laminated safety glass.

2.3 Terms and Definitions

For the purpose of this certification scheme, the following definitions apply:

- Applicant: a legal entity being the manufacturer or his duly authorised representative established in the EEA;
- Certificate: the document that will be issued by the certification body after it is established that the product/process/service meets the applicable requirements as specified in the Certification scheme;
- Certification: third-party attestation related to products, processes, systems or persons;
- Certification body: third-party conformity assessment body operating certification schemes;
- Certification decisionmaker: person within the certification body who is responsible for collecting all data needed for preparing the decision about conformity or non-conformity with the requirements and issuing the certificate after reviews of test and audit reports by the Reviewer and the final decision of the managing director or a duly authorised employee of the certification body;
- Certification requirement: specified requirement, including product requirements, that is fulfilled by Client as a condition of establishing or maintaining certification;

- Certification scheme: certification system related to specified products, to which the same specified requirements, specific rules and procedures apply;
- Certification system: rules, procedures and management for carrying out certification;
- Client: organization or person responsible to a certification body for ensuring that certification requirements including product requirements are fulfilled;
- FPC: Factory Production Control;
- Non-conformity: not complying with the requirement;
- Product requirement: requirement that relates directly to a product, specified in standards or in other normative documents identified by the certification scheme;
- Remark: improvement and/or corrections are needed. If no improvement/corrections are implemented, then this will lead to Non-conformities;
- Reviewer: person within the certification body who is evaluating results of tests and/or audits in relation to the applicable requirements;
- Surveillance: systematic iteration of conformity assessment activities as a basis for maintaining the validity of the statement of conformity;
- Suspension of a certificate: temporary invalidation of the statement of conformity for all or part of the specified scope of attestation;
- Withdrawal of a certificate: cancellation of the statement of conformity.

3 Requirements and Application

3.1 Requirements

Requirements for AVCP system 1 (with fire or bullet or explosion resistance) glass products (mandatory certification): There shall be a Certification Agreement signed (a contract) in which the following items are arranged:

- Initial Audit/Factory Inspection of the manufacturing plant and factory production control;
- Sample taking for the Initial Type Testing by or on behalf of the Certification Body;
- Initial Type Testing (determination of product-type);
- AVCP system 1 Certificate if Initial Audit and Initial Type Testing were with positive results;
- Surveillance Audits, assessment and evaluation of factory production control.

Requirements for AVCP system 3 (without fire or bullet or explosion resistance) glass products (voluntary certification): There shall be a Certification Agreement signed (a contract) in which the following items are arranged:

- Initial Audit/Factory Inspection of the manufacturing plant and factory production control;
- Initial Type Testing (determination of product-type);
- AVCP system 3 Certificate if Initial Audit and Initial Type Testing were with positive results;
- Surveillance Audits, assessment and evaluation of factory production control.

3.2 Application

The application for certification can be done by a legal entity being the manufacturer or his duly authorised representative established in the EEA. TÜV Rheinland will send the applicant an Application form and after this is received back, filled in, TÜV Rheinland can send a Certification Agreement.

4 Certification process

4.1 Initial Audit/Factory inspection

The process starts with the Initial Audit/Factory inspection, during which must be established if the Applicant has a proper Factory Production Control system in place. Product standards for glass in building do contain a normative Annex A with Factory Production Control requirements.

If the Applicant has applied for certification of a AVCP system 1 glass product, the Certification Body must be involved in sample taking for the Initial Type Testing. In many cases this could be combined with the Initial Audit/Factory inspection.

After completion of the Initial Audit/Factory inspection TÜV Rheinland Nederland will send a report with the results.

4.2 Initial Type Testing (determination of the product-type)

AVCP system 3 Initial Type Testing will be performed by or on behalf of TÜV Rheinland Nederland. AVCP system 1 Initial Type Testing will be performed by a specialised Test Laboratory, after TÜV Rheinland Nederland has accepted the laboratory and its ITT results. Sample taking must be performed in the presence of a person from or on behalf of the Certification Body TÜV Rheinland Nederland.

If the Applicant proposes a test laboratory that has no ISO 17025 accreditation for testing according to the product standard involved, TÜV Rheinland Nederland needs to witness the tests on expenses of the Applicant.

After completion of Initial Type Testing TÜV Rheinland Nederland (AVCP system 3) or the specialised Test Laboratory (AVCP system 1) will send a report with the results.

4.3 Evaluation

After the Initial Audit/Factory inspection (and for AVCP system 1 products: sample taking) and Initial Type Testing are concluded, the results will be evaluated by the certification decisionmaker. The certification decisionmaker makes sure that test and/or audit reports are reviewed by the Reviewer.

If all results are positive, the certification decisionmaker will advise the director or a duly authorised employee of TÜV Rheinland Nederland to issue the certificate. The basic condition is that the Applicant follows the general rules as laid down in a currently cited version of the harmonised European standard (or European technical Assessment).

In case TÜV Rheinland Nederland is not satisfied that all requirements for the assessment and verification of constancy of performance are met, the Applicant will be informed about the aspects that failed. Both parties will agree about a time limit for remedial action.

If the client can show that remedial action has been taken to meet all requirements within the agreed time limit, TÜV Rheinland Nederland shall repeat only the necessary parts of the initial inspection procedure and/or determination of the product-type.

4.4 Decision on certification

The actual decision for issuing the certificate will be made by the managing director of TÜV Rheinland Nederland or a duly assigned employee in his place.

4.4.1 Granting

The certificate will be granted after the decision was made by the managing director of TÜV Rheinland Nederland or a duly assigned employee in his place.

4.4.2 Maintaining

The certificate does not have an end date, the certificate will be valid as long as all certification requirements and product requirements are met.

4.4.3 Extending

The scope of the certificate can be extended. Products and/or production facilities could be added after evaluation by the certification decisionmaker. This evaluation could lead to additional audits and/or tests.

4.4.4 Reducing

The scope of the certificate can be reduced. Products and/or production facilities could be deleted from the certificate.

4.4.5 Suspending

The certificate could be suspended by TÜV Rheinland Nederland in cases that the certification requirements are not met (e.g. changing the product without prior notification to the certification body, non-fulfilment of financial obligations towards the certification body) and it can be suspected that this is only for a short period of time. After the non-conformities are solved, TÜV Rheinland Nederland will confirm to the holder of the certificate that the certificate is valid again. During the suspension no construction products covered by the scope of certification shall be CE marked or made available on the market.

4.4.6 Withdrawing

The certificate will be withdrawn by TÜV Rheinland Nederland in the following cases:

- After a request of the holder of the certificate;
- If the construction product covered by the scope of certification does no longer permanently meet the certification and product requirements.

After withdrawing no construction products covered by the scope of certification shall be CE marked or made available on the market.

The holder of the certificate will be informed about withdrawing in writing. The holder of the certificate has to inform the market about the withdrawal of the certificate of his product.

Communication: TÜV Rheinland as Notified Body has the duty to inform the notifying authority (Ministry) of any refusal, restriction, suspension or withdrawal of certificates (CPR Article 53).

4.5 Resolving non-conformities

If non-conformities are found, the holder of the certificate has to send within 14 days after the conclusion of the audit to the certification body an analysis about what caused the non-conformity and specific correcting measures.

If non-conformities are found during a Factory Production Control audit, a verification inspection will follow within 2 months after performance of the audit.

If during the verification inspection again non-conformities will be found, an initial factory inspection of the manufacturer and the production location will follow within 3 months after the verification inspection.

If during this initial factory inspection again one or more non-conformities are found, the products will be judged as no longer conforming to the requirements which will lead to withdrawal of the certificate.

(Source: conformity parts of glass product standards).

4.6 Resolving remarks

The implementation of the corrections and corrective measures regarding a remark will be verified during the next FPC audit.

4.7 Publication of certified products

Certified products will be published on Certipedia, the TÜV Rheinland website with certified systems, products etc.

4.8 Results from parties outside the contractual control of TÜV Rheinland

Conformity assessment results from parties outside the contractual control of TÜV Rheinland could be accepted if that party conforms to requirements set by TÜV Rheinland Nederland.

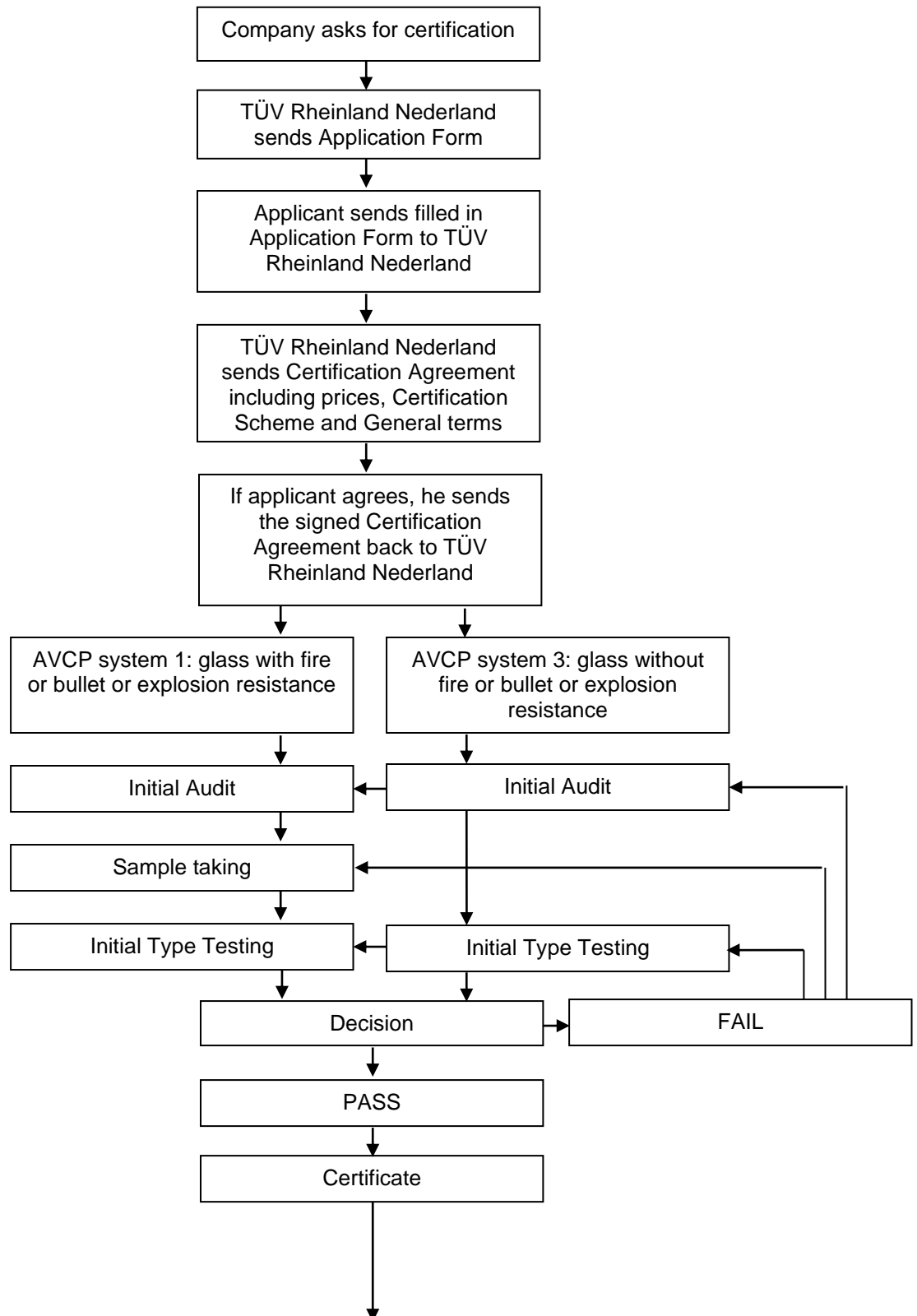
4.9 Issuing the certificate

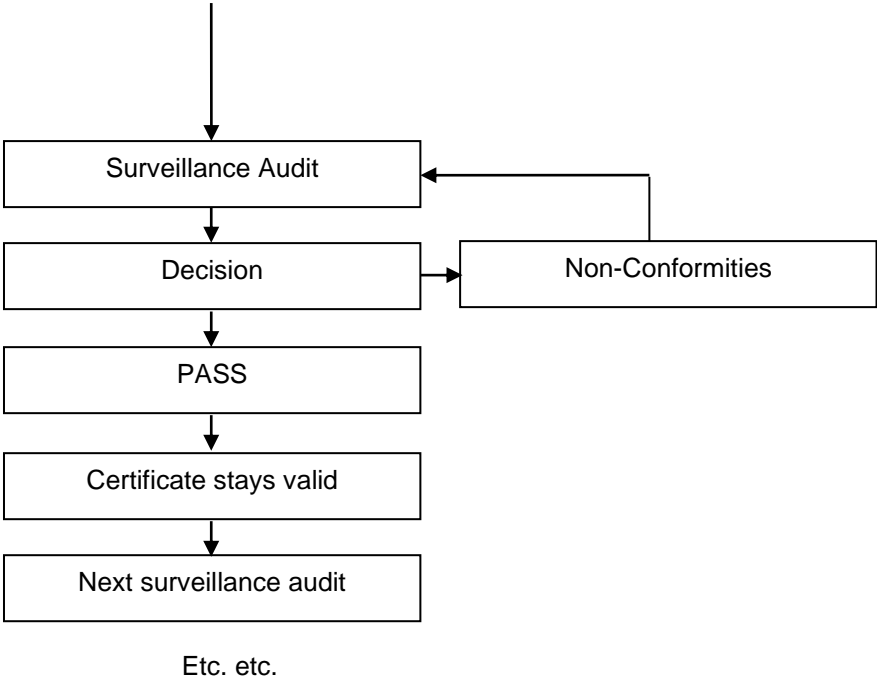
The certificate will be issued after the applicant and the product fulfilled all applicable requirements of this Certification Scheme, of the Certification Agreement (contract) and the 'General Terms and Conditions for Advisory, Research and Certification'.

4.10 Surveillance

Surveillance of the production of the certified product is mandatory both for the mandatory AVCP system 1 and voluntary AVCP system 3. This is further stipulated in the Certification Agreement (contract).

Annex A: Systematic scheme diagram





Annex B: Example of a certificate for AVCP system 1 product

(Subject to changes caused by newer Guidance/Position Papers issued by the Group of Notified Bodies)



Notified Body nr. 0336

Certificate of constancy of performance

0336 – CPR - CERTIFIKAATNUMMER

In compliance with Regulation 305/2011/EU of the European Parliament and of the Council of 9 March 2011 (the Construction Products Regulation or CPR), this certificate applies to the construction product(s)

e.g. Laminated safety glass with intended use ...

specified by the commercial name(s):

Names, types

produced by or for:

Name of company

and produced in the manufacturing plant(s):

Name, address etc. manufacturing plant(s)

This certificate attests that all provisions concerning the assessment and verification of constancy of performance and the performances described in Annex ZA of standard(s)

NUMBER NORM + YEAR (+ Amendments with year)

under system 1 for the performances set out in this certificate are applied and that

the construction product fulfils all the prescribed requirements for these performances.

This certificate was first issued on **FILL IN DATE (and if that date is before 1 July 2013, add then: under the Construction Products Directive 89/106/EEC (CPD))** and will remain valid as long as the test methods and/or factory production control requirements included in the harmonised standard, used to assess the performances of the declared essential characteristics, do not change, and the construction product, and the manufacturing conditions in the plant are not modified significantly, unless suspended or withdrawn by the product certification body.

TÜV Rheinland Nederland BV
Westervoortsedijk 73
NL – 6827 AV ARNHEM
The Netherlands

Arnhem,

Name, job title/position, signature

Annex C: Example of a certificate for AVCP system 3 product

(Subject to changes caused by new Guidance/Position Papers issued by the Group of Notified Bodies)



Certificate of constancy of performance

0336 – CPR - CERTIFIKAATNUMMER

In compliance with the Regulation 305/2011/EU of the European Parliament and of the Council of 9 March 2011 (the Construction Products Regulation or CPR), this certificate applies to the construction product

e.g. Laminated safety glass with intended use ...

specified by the commercial name(s):
Names, types

produced by or for:
Name of company

and produced in the manufacturing plant(s):
Name, address etc. manufacturing plant(s)

This certificate attests that all provisions concerning the assessment and verification of constancy of performance and the performances described in Annex ZA of standard(s)

NUMBER NORM + YEAR (+ Amendments with year)

under system 3 (on voluntary basis) for the performances set out in this certificate are applied and that

the product fulfils all the prescribed requirements set out above.

This certificate was first issued on **FILL IN DATE** (and if that date is before 1 July 2013, add then: **under the Construction Products Directive 89/106/EEC (CPD)**) and will remain valid as long as the test methods and/or factory production control requirements included in the harmonised standard, used to assess the performances of the declared essential characteristics, do not change, and the construction product, and the manufacturing conditions in the plant are not modified significantly, unless suspended or withdrawn by the product certification body.

TÜV Rheinland Nederland BV
Westervoortsedijk 73
NL – 6827 AV ARNHEM
The Netherlands

Arnhem,

Name, job title/position, signature