

Corporate Presentation

TÜV Rheinland Korea



## What drives us.

‘We make the world a safer place.’ This is the purpose that inspires everything we do at TÜV Rheinland. As a leading global TIC company, we are dedicated to making technologies, processes, and products safe and trustworthy while protecting people and the environment.



# Milestones of a long tradition

TÜV Rheinland – originator of many TIC services



## We ensure quality & safety

### INDUSTRIAL SERVICES & CYBERSECURITY

- Pressure Equipment
- Elevators & Lifting Equipment
- Electrical Engineering & Building Technology
- Industrial Inspection & Materials Testing
- Infrastructure & Project Supervision
- Energy & Environment
- Cybersecurity & Functional Safety

### MOBILITY

- Periodical Technical Inspection
- Driver's License
- Car Services & Appraisal
- Engineering & Type Approval
- Rail

### PRODUCTS

- Softlines
- Hardlines
- Electrical
- Solar & Commercial
- Medical

### PEOPLE & BUSINESS ASSURANCE

- Certification of Management Systems
- Customized Services
- Government Inspections & International Trade
- Digital Transformation
- Occupational Health & Safety
- Training & HR Development
- Labour Market Services

4 BUSINESS STREAMS

24 BUSINESS FIELDS



SINCE **2006** MEMBER OF UN GLOBAL COMPACT

The ambition to make life safer and to act sustainably expresses itself in our commitment to the principles of the UN Global Compact and is reflected in our services.

**> 700** ACCREDITATIONS

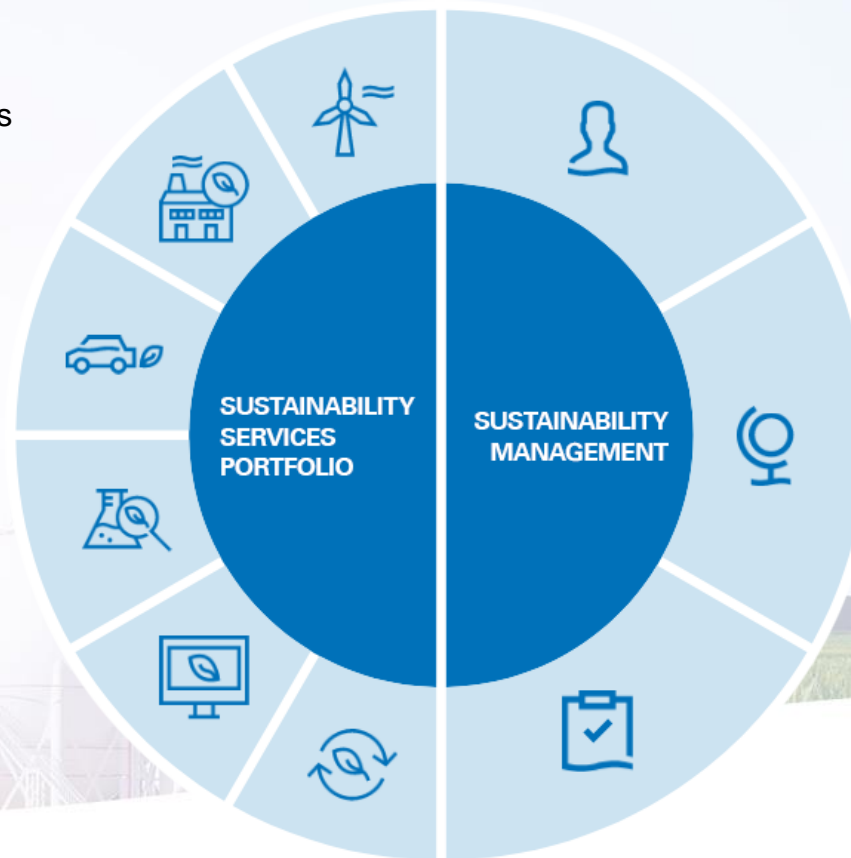
have been granted to TÜV Rheinland worldwide. They regularly confirm the consistent quality and professional independence of our work. They are essential factors for the trust in our services and certificates.

# Sustainability

What we want to achieve.

## 1. FOR OUR CUSTOMERS

- We want to significantly expand our ESG services in all business streams.



## 2. IN OUR COMPANY

- We want to be globally greenhouse gas-compensated from 2028, and in Germany from as early as 2025.
- We want to increasingly embed sustainability - within the Group and along the value chain – and document and improve it transparently and comprehensibly. We have our performance reviewed by EcoVadis and are aiming for Gold status.



## Gold status in the EcoVadis rating

We have our sustainability performance externally assessed by the independent sustainability rating platform EcoVadis. This is based on international CSR standards such as the guidelines of the Global Reporting Initiative, the ILO and ISO 26000. TÜV Rheinland has been rated since 2019. In December 2024 TÜV Rheinland has been rated Gold by EcoVadis, the world's leading provider of sustainability ratings, with 80 out of a possible 100 points. This puts TÜV Rheinland in the top 5 per cent of companies rated. The company improved its overall score by one point compared to the previous year (79 points).



## ESG services: significant expansion

TÜV Rheinland with expertise in six sustainability fields



ENERGY



INFRASTRUCTURE



MOBILITY



CONSUMPTION



WORK EXCELLENCE



BUSINESS  
PRACTICES



## Test mark and Certipedia - Building trust and credibility

Create greater clarity for companies, retailers and consumers. Around the world, systematic and convincing.

### TEST MARK

Every test mark carries an individual ID number and a QR code. Consumers can view the contents of test certificates online by entering the ID number, QR code or by carrying out a keyword search.

### CERTIPEDIA

The Certipedia database with over 740,000 entries contains a comprehensible summary of the criteria used in the test in addition to the test mark displayed.

# For maximum customer reach.

The TÜV Rheinland test mark and Certipedia ensure greater clarity for companies, retailers and consumers.



## WEB

The mark links the interested parties directly to the Certipedia entry and the easy-to-understand information about our inspections.

## ID-NUMBER

By entering the individual ID number, all market participants can see the test contents of the certificate.

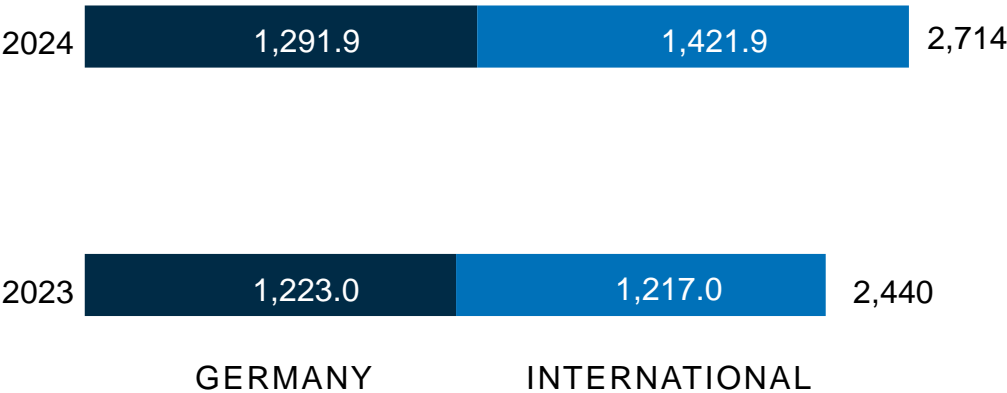
## POINT OF SALE

The QR-Code leads consumers directly to the Certipedia entry - anywhere and anytime.

# Figures 2024

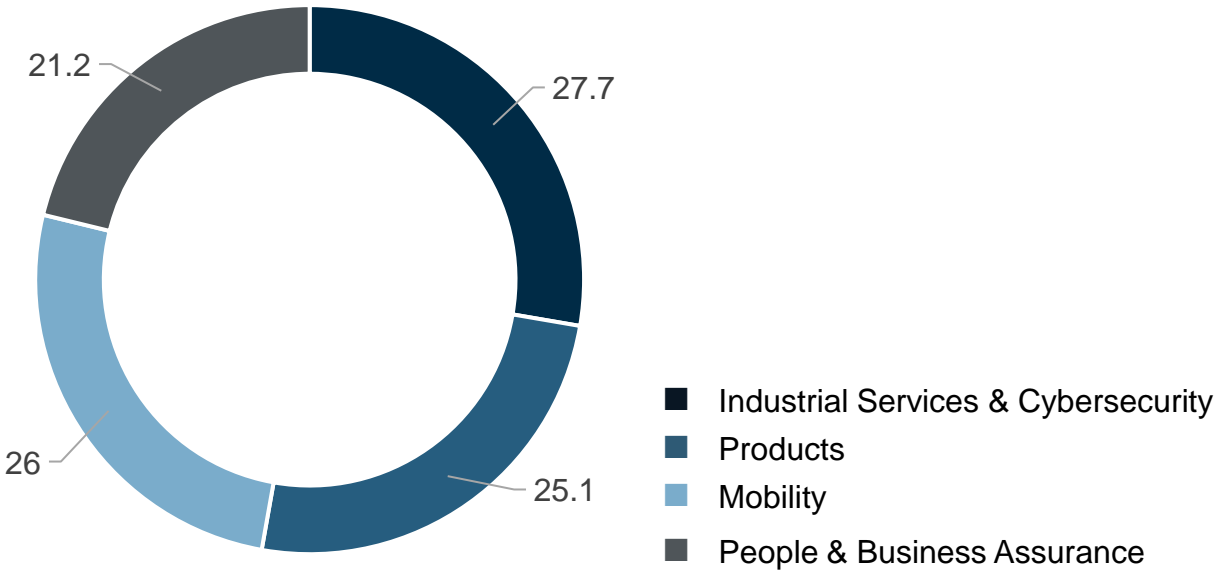
2,714 REVENUE IN € MILLIONS (약 4조 원)

Revenue Germany/International (in € millions)



Consolidated data (according to IFRS)

Revenue per Business Stream (in %)



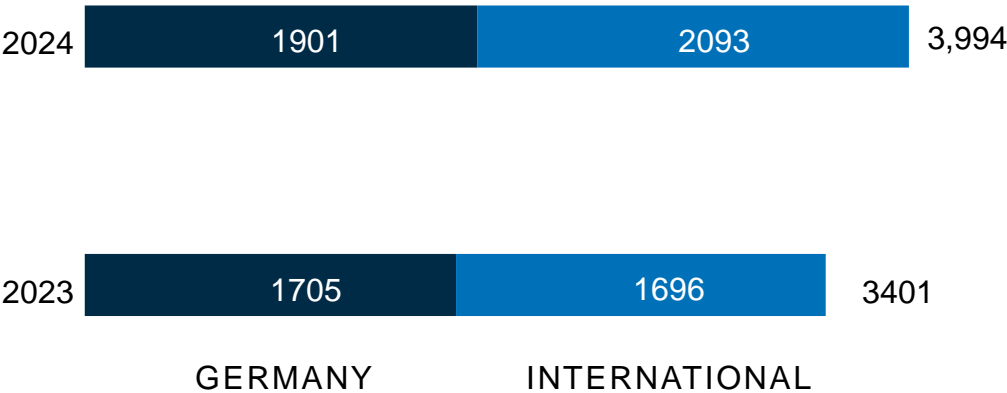
Unconsolidated data

# Figures 2024

3,994

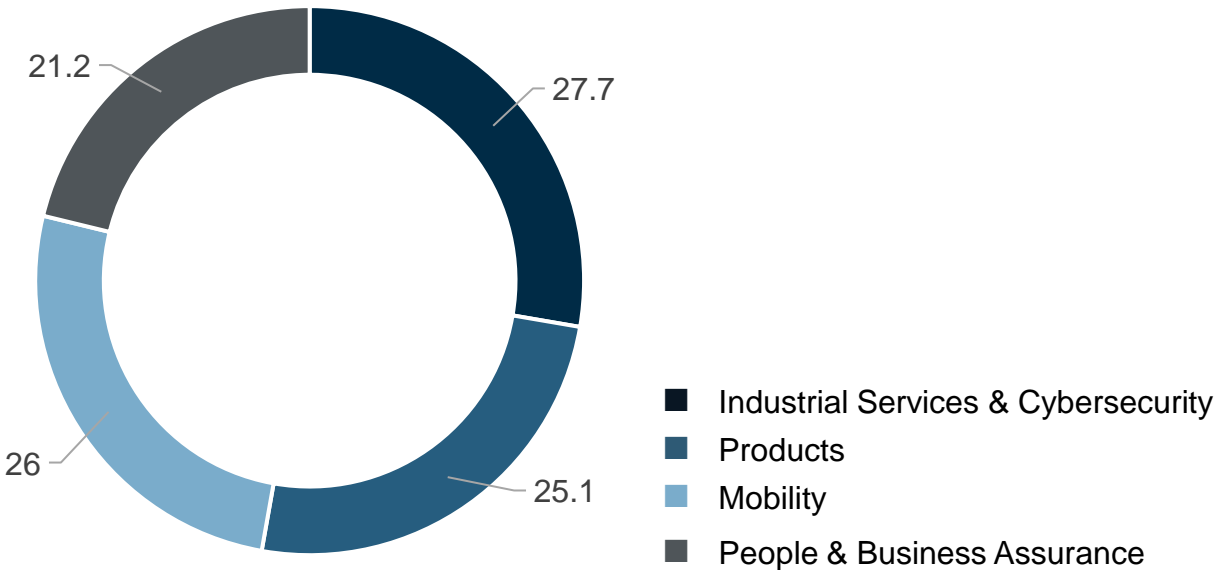
REVENUE IN ₩ BILLIONS (약 4조 원 / 2,714 in € millions)

Revenue Germany/International (in ₩ billions)



Consolidated data (according to IFRS)

Revenue per Business Stream (in %)



Unconsolidated data



## Corporate Values

### INTEGRITY

We are incorruptible, independent, fair, and trustworthy. Our decisions are taken impartially and transparently, in accordance with all applicable laws and standards. Dependability is part of our DNA.

### EXCELLENCE

We work with precision and are committed to the highest standards of quality. We are performance-oriented, determined and always give it our all. We continuously develop our expertise and technical capabilities.

### CUSTOMER FOCUS

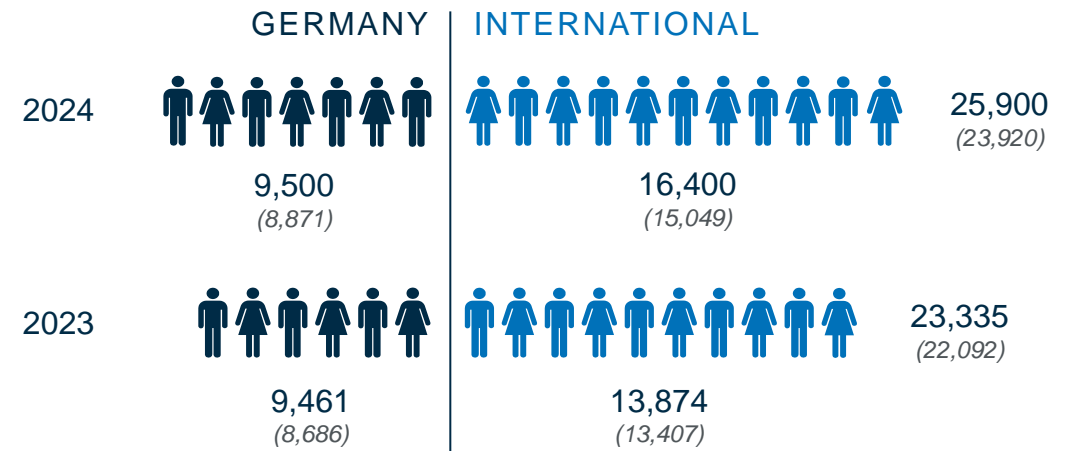
Our customers' needs are at the heart of everything we do. We are agile, committed, and act with speed and purpose. As an equal partner, we identify opportunities and turn them into value for our customers.



# 25,900

EMPLOYEES\*

Hand in hand with specialists, auditors, examiners, engineers – the qualifications of our employees are as diverse as our tasks.



\* Number of employees as of 12/31/2024  
(Annual average of full-time equivalents)



German at heart – global in mind

50 COUNTRIES

>500 LOCATIONS

250 LABORATORIES

In 1970, TÜV Rheinland began to internationalize its operations. Today, we are active on all continents. From Argentina to Morocco to Vietnam.



## TÜV Rheinland Korea

TÜV Rheinland Korea is the first foreign certification body in Korea, founded in 1987.

A reliable partner for domestic companies, it provides testing and certification services according to various international testing standards and supports domestic firms to enter the global market.

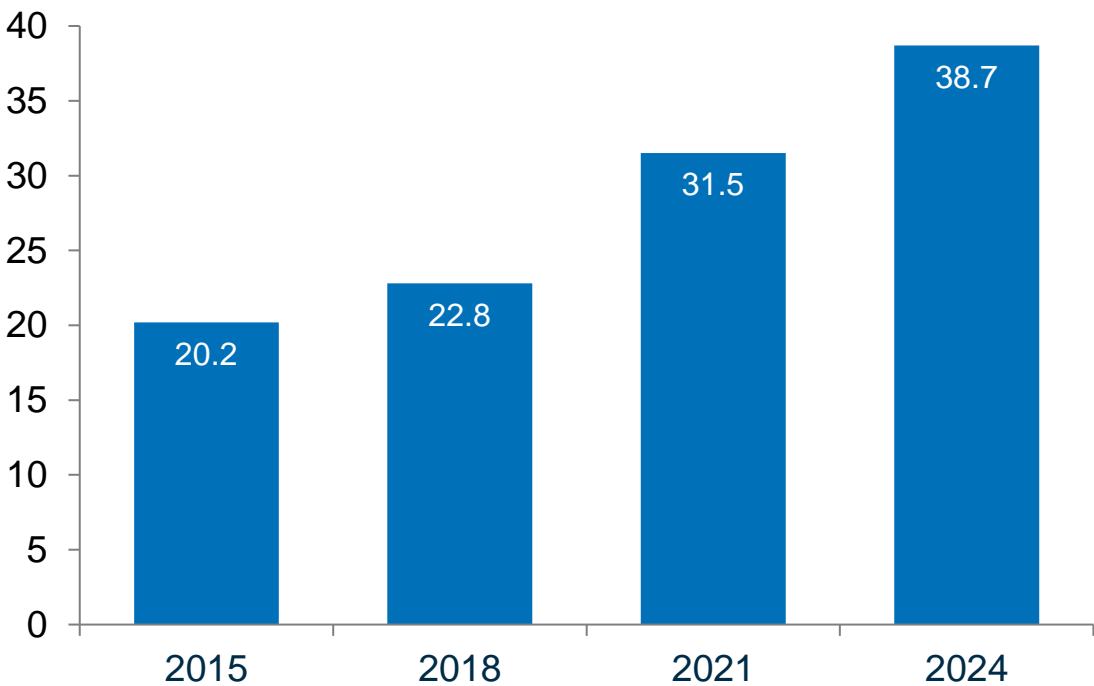
# TÜV Rheinland Korea

Representative Director & CEO	Frank Juettner
Foundation	Apr. 1987
Business Industry	Testing, Inspection & Certification Services
Staff	186 employees
Locations	Seoul (Head Office), Daegu and Changwon
Laboratories	<ul style="list-style-type: none"><li>Seoul: Safety, Energy Efficiency, Telecommunication</li><li>Changwon: Energy Efficiency</li></ul>
Business Streams	Industrial Services & Cybersecurity, Mobility, Products, People & Business Assurance

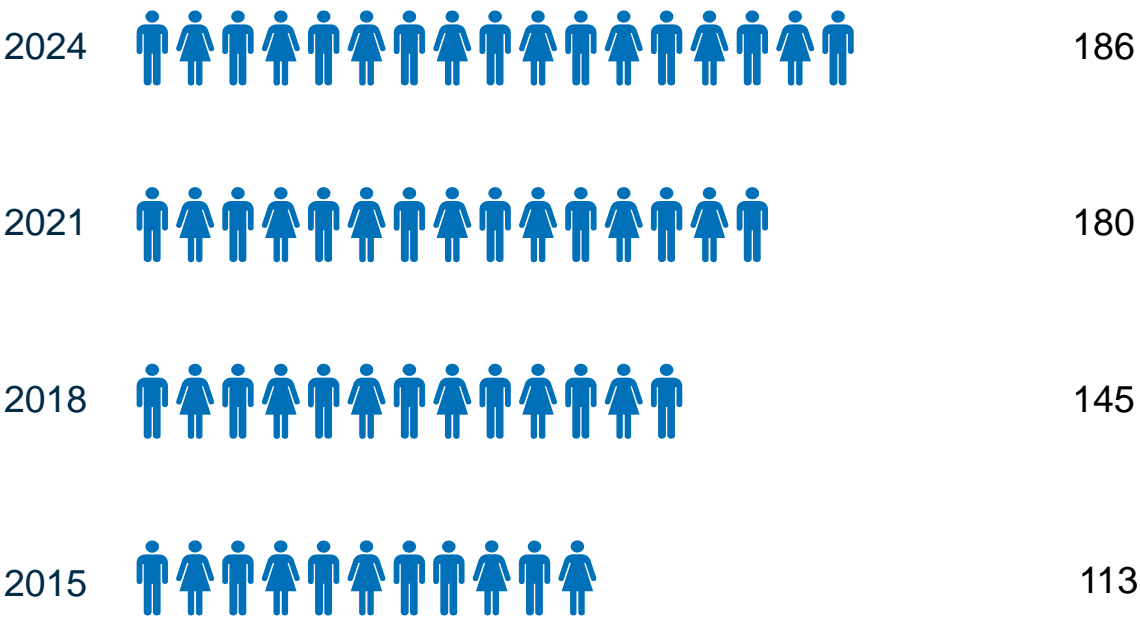


# TÜV Rheinland Korea - successful growth

Revenue (Mil. Euro)

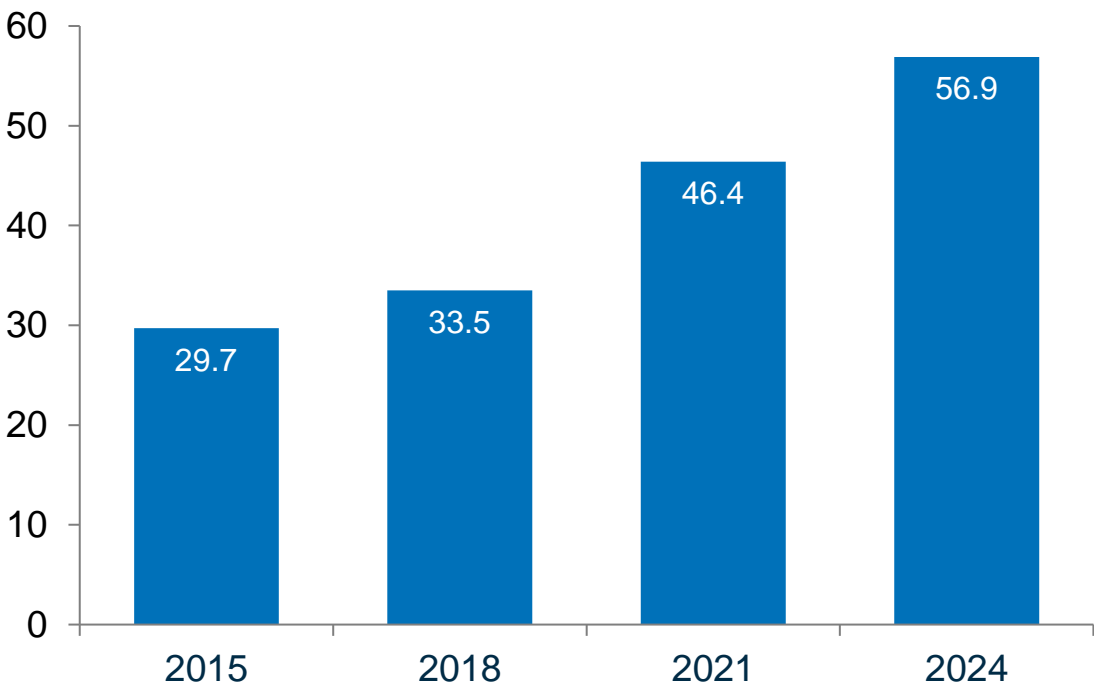


Employees

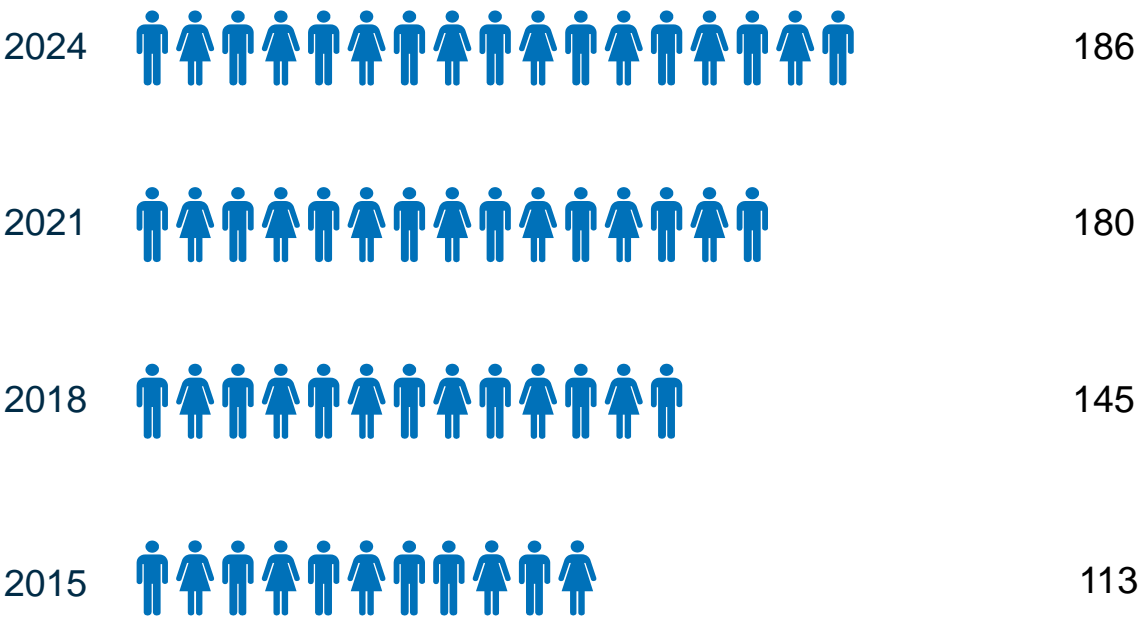


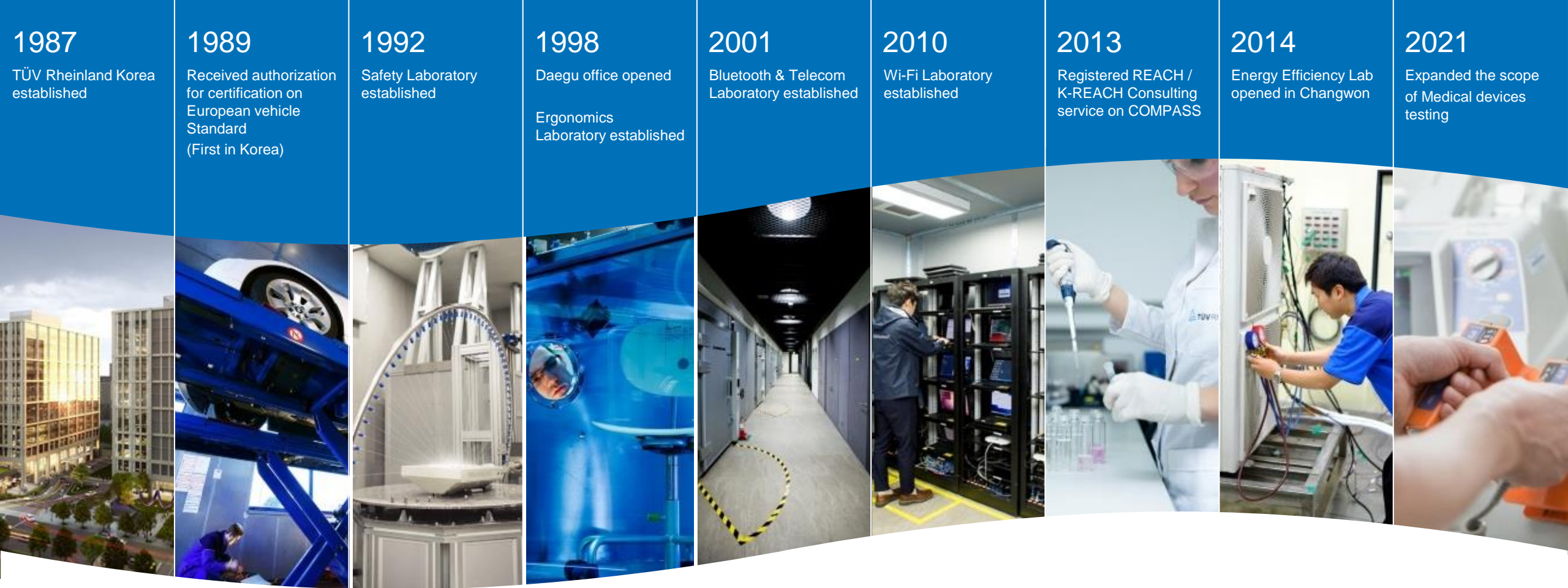
# TÜV Rheinland Korea - successful growth

Revenue (Bil.KRW)



Employees





TÜV Rheinland Korea History

Your reliable partner for safety and quality testing, inspection and certification.

# TÜV Rheinland Korea History

1987	TÜV Rheinland Korea established (First foreign certification body in Korea)
1989	Received authorization for certification on European Car Standard (First in Korea)
1992	Safety Laboratory established*
1998	Daegu office opened Ergonomics Laboratory established*
2001	Received CBTL(Certification Body Testing Laboratory) status Bluetooth & Telecom Laboratory established*
2003	Received BQTF(Bluetooth Qualification Test Facility) status first in Korea
2004	Changwon office opened ZigBee Laboratory established
2007	Laser Laboratory
2008	Lab expansion for luminaries & white goods CNG / LPG vehicle components
2009	Authorization for Taiwan Type Approval CTIA authorization for Bluetooth laboratory
2010	Wi-Fi Laboratory established* and service launched

2012	Designated as a LED lighting test lab by IECCE/CB Achieved ISO9001 certification, Pre-Shipment Inspection(PSI), WPC test
2013	Expanded Wi-Fi test scope (VHT, PMF etc.) Launched the battery team Registered the REACH / K-REACH Consulting service on COMPASS
2014	Total number of Wi-Fi chambers expanded to 5 NFC & PMA (Power Matters Alliance) service launched Opened Energy Efficiency Lab in Changwon
2015	Expanded Bluetooth test equipment Expanded Energy Efficiency testing scope (Refrigerator & Washing machine)
2016	LoRa® certification program, EEL is KOLAS accredited
2017	Opened Photobiological safety testing lab GSO Notified Body (NB) for low voltage electrical equipment and appliances
2018	Relocation and expansion of Seoul HQ and test center to double floor space
2020	Expanded Energy Efficiency Laboratory in Changwon (1,700 sqm)
2021	Expanded our scope to Medical devices testing
2022	Expanded Wireless/IoT testing scope (Matter Testing and Certification Program)
2024	Expanded Wireless/IoT testing scope (Wi-Fi CERTIFIED 7)

\* accredited by DAkkS according to EN ISO/IEC 17025



## Industrial Services & Cybersecurity

# Industrial Services & Cybersecurity

## Pressure Equipment



As a Notified Body for the European Pressure Equipment Directive (PED) 2014/68/EC, we review and certify all elements and procedures in connection with the certification process. Moreover, we are accredited by the American Society of Mechanical Engineers (ASME) as an authorized inspection agency.

- PED (2014/68/EU)
- CPR (No 305/2011)
- SPVD (2009/105/EC)
- TPED (2010/35/EU)
- ASME certification
- AD 2000 Merkblätter

## Industrial Inspection



To ensure your project is completed successfully, Our experts support you in all phases of a project and during asset operation: from vendor selection, expediting, and pre-shipment inspection to supervision of loading and discharge, site supervision during construction, and ultimately in-service inspection.

- Vendor Inspection
- Expediting
- Site-Supervision in Construction
- In-Service Inspections

## Energy & Environment



TÜV Rheinland provides sustainable solutions for owners, operators, EPC contractors and manufacturers of energy assets and facilities.

- Wind (Onshore/Offshore)
- Hydrogen
- Carbon footprints
- Risk and safety consulting
- Asset Integrity Management (AIM)
- ATEX/IECEx
- Data Center Infrastructure

## Cybersecurity & Functional Safety



TÜV Rheinland offers functional safety and cybersecurity services based on international standards such as IEC 61508, IEC 61511, ISO 13849, ISO 26262, ISO/SAE 21434, ISO 21448.

- Training
- Assessment/Certification
- Testing - vulnerability assessments, penetration tests and application tests



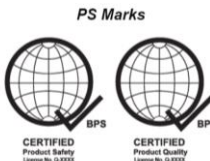
## Mobility

# Mobility

## Engineering & Type Approval

TÜV Rheinland supports you obtain national and international approvals for your automotive systems and components. We offer individual approvals and can cover all your homologation and type testing needs.

- European Homologation / Type Approval
  - e-mark / E-Mark
- MAS (Market Access Service)
  - Brazil INMETRO
  - India AIS / BIS
  - Indonesia SNI
  - Thailand TISI
  - Philippine Standard PS Mark
- Automotive new technologies technical advisory (eCall, CMS, ADAS, EMC, etc)
- EV High Voltage Safety Training & Technical Advisory
- Korean Automotive Regulatory Advisory (KMOVSS, Emission, Noise, etc)



## Rail

TÜV Rheinland is a global assessment and certification body (ISO 17020 Inspection Body / ISO 17065 certification body), TSI (2008/57/EC) certification body for all railway systems (NoBo), as well as a certification body for the International Railway Industry Standard (IRIS/ISO 22163).

- SIL Assessment
- ISA of Project and System
- Railway System & Product Certification
- TSI (Technical Specification for Interoperability)
- ISO/TS 22163 (IRIS)
- RAMS and Software assurance
- Risk Assessment and SMS
- LCC (Life Cycle Cost)
- Cybersecurity & Risk management
- Hydrogen, etc.



**Notified Body 1010**





## Products

# Products

One-Stop Solution to secure safety and quality of a variety of products



## Softlines

- Toy, Textiles, Footwear Cosmetics, etc.
- Biodegradable testing
- Flustix Plastic-Free
- FCM
- REACH, RoHS, WEEE, Chemical testing
- DETOX

## Hardlines

- Furniture
- Bicycle and accessories
- Sports & leisure equipment
- Building Material & Hardware
- Household goods
- Packaging
- Personal Protect Equipment (PPE)

## Electrical

- Household & Commercial Appliances
- Luminaries/LED
- IT, Telecommunication, Office Equipment
- Display Equipment
- Audio/Video Equipment
- Lab Equipment
- Air Conditioning & Heating Equipment

## Solar & Commercial

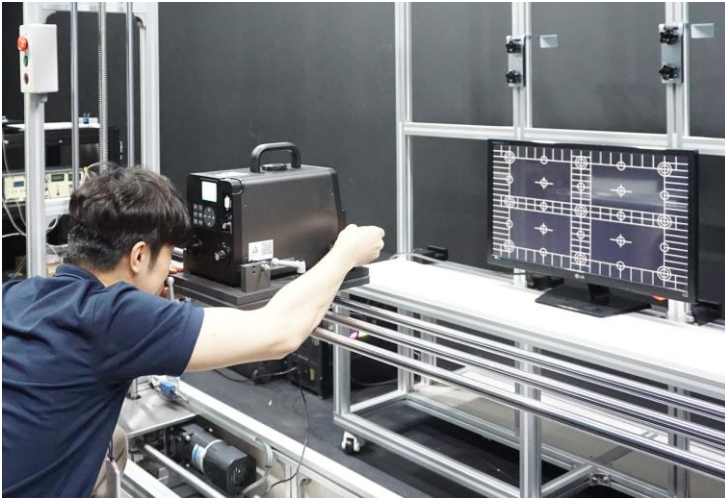
- SEMI S2/S8 evaluation
- Batteries
- EV Charging systems
- Robotics – Safety/EMC
- North America field labeling
- Industrial machinery
- ESS
- PV Module, components
- Power plants

## Medical Devices

- EU MDR/IVDR
- Quality management system certification (ISO 13485, MDSAP)
- International approval for medical devices
- Medical device testing
- Cybersecurity

# Products

## TÜV Rheinland Korea Test Center



### Electrical Safety Lab

Photobiological safety test, IP test, Ergonomics test, Laser, Lighting products, ITE/AV, Medical devices, Image Quality test, Energy Efficiency test for Household appliances, etc.



CE 0197



### Wireless/IoT Lab

Wi-Fi, Bluetooth SIG, Matter, ZigBee, LoRa, WPC, AirFuel, OpenADR, etc.



### Energy Efficiency Lab

Energy efficiency test & Performance evaluation for Air Conditioners, Heat Pumps, Domestic Hot Water Unit, Refrigerators and Dehumidifiers



## People & Business Assurance

# People & Business Assurance

## Certification of Management Systems

- ISO 9001 (Quality Management)
- ISO 14001 (Environment Management)
- ISO 45001 (Occupational Health and Safety Assessment)
- IAFA 16949 (Quality Management in the Automotive Industry)
- ISO 50001 (Energy Management)
- ISO/TS 22163 (Quality Management in the Rail Industry)
- ISO 22301 (Business Continuity Management)
- ISO 37001 (Anti-Bribery Management System)
- ISO 27001 (Information Security)
- ISO/IEC 20000 (IT Service Management)
- TISAX

## Customized Services

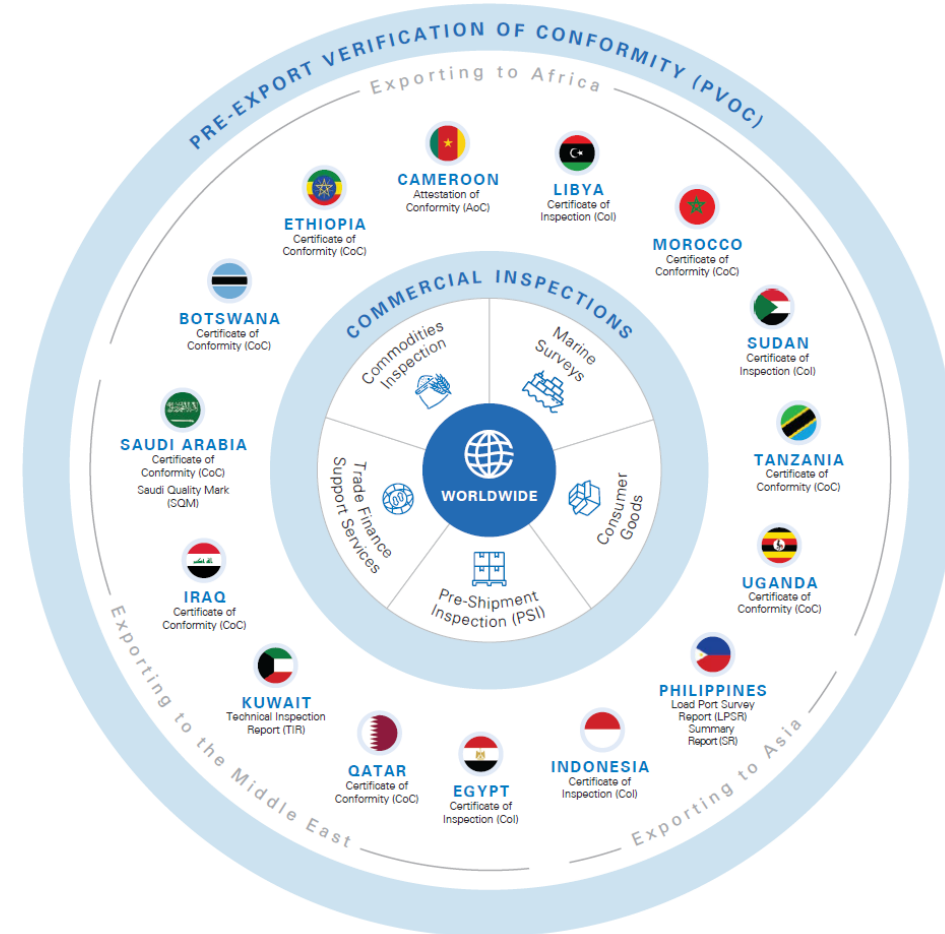
### 1) Supply Chain Audits Solutions

- Individual CoC (Code of Conduct)
- amfori BSCI (Business Social Compliance Initiative for Consumer Business)
- PSCI (Pharmaceutical Supply Chain Initiative)
- RBA (Responsible Business Alliance) for Electrical and Electronics)
- RSCI (Responsible Supply Chain Initiative for Automotive)
- SSPA (Supplier Sustainability Performance Assessment for German Supply Chain Due Diligence Act, LkSG & European Corporate Sustainability Due Diligence Directive, CSDDD)

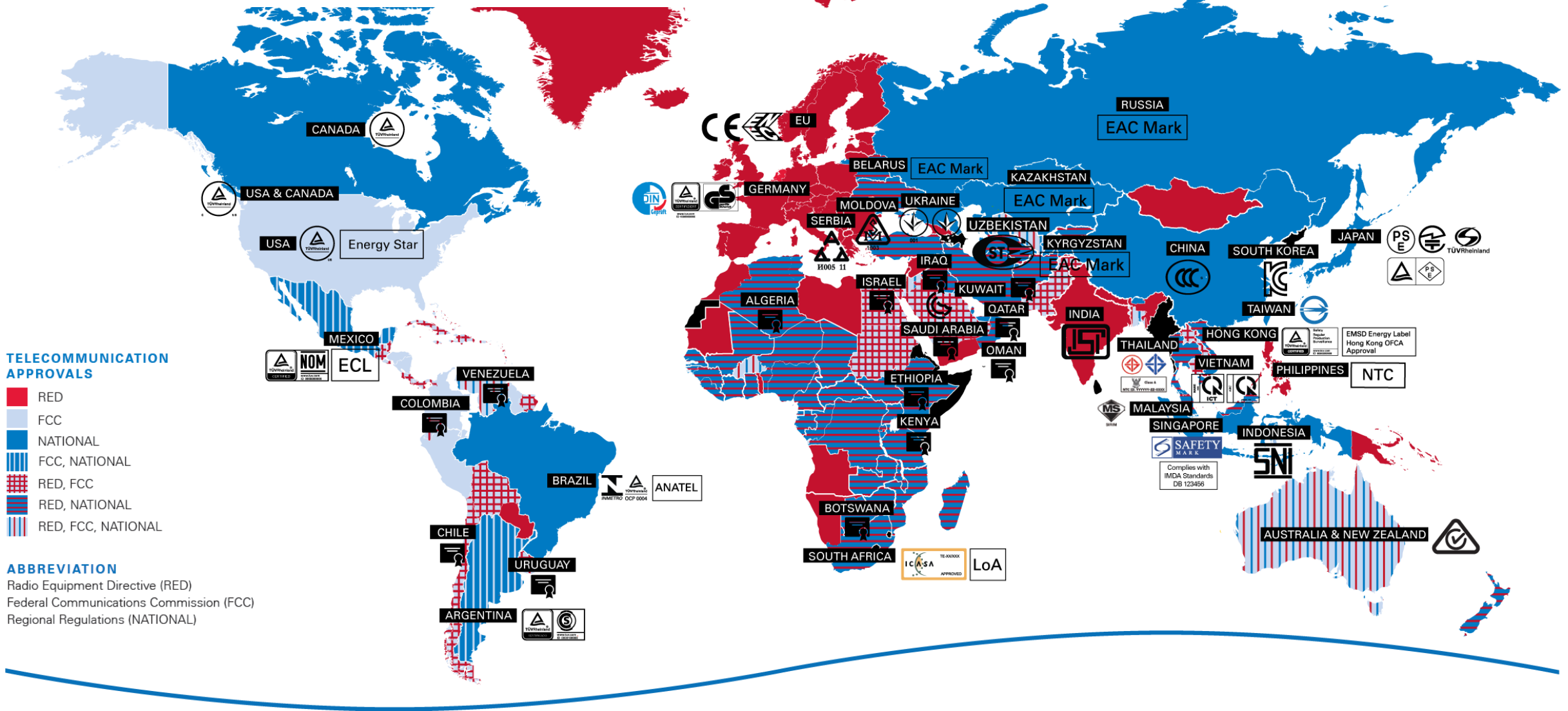
### 2) Sustainability Solutions

- ESG Report Assurance
- Life Cycle Assessment (LCA)
- Product Carbon Footprint (PCF)

## Government Inspections & International Trade



# Market Access Services



# TÜV Rheinland Korea's Customers

TÜV Rheinland Korea has more than 10,000 clients.  
Most Global Leaders in Korea benefit from TÜV Rheinland's Services.



# Thank you!

## TÜV Rheinland Korea

### Head Office / Test Center

2F, N-Tower, Semicolon Mullaeh,  
25, Mullaeh-ro 28-gil, Yeongdeungpo-gu,  
Seoul

Tel: 02-860-9860 Fax: 02-860-9862

[info@kor.tuv.com](mailto:info@kor.tuv.com)

[www.tuv.com](http://www.tuv.com)

[blog.naver.com/tuv\\_korea](http://blog.naver.com/tuv_korea)

### Daegu Office

12F, KTMF Bldg., 334, Dongdaegu-ro, Suseong-gu, Daegu

Tel: 02-860-9870 Fax: 02-860-9871

### Changwon Office/Energy Efficiency Test Center

49, Jukjeonro 74 beon-gil, Uichang-gu,

Changwon, Gyeongsangnam-do

Tel: 02-860-9850 Fax: 02-860-9851

#### LEGAL DISCLAIMER

This document remains the property of TÜV Rheinland. It is supplied in confidence solely for information purposes for the recipient. Neither this document nor any information or data contained therein may be used for any other purposes, or duplicated or disclosed in whole or in part, to any third party, without the prior written authorization by TÜV Rheinland. This document is not complete without a verbal explanation (presentation) of the content.