



Streamline Your Operations with Robotic Process Automation (RPA)

Boost Efficiency & Cut Costs with Smart Automation Solutions

In today's rapidly evolving business environment, operational efficiency and cost-effectiveness are critical to success. Robotic Process Automation (RPA) is revolutionizing the way businesses operate by automating repetitive, manual tasks. TÜV Rheinland brings you cutting-edge RPA solutions that enhance productivity, reduce errors, and allow your organization to focus on what matters most – strategic growth.

TAILORED RPA SOLUTIONS FOR YOUR BUSINESS

At TÜV Rheinland, we offer complete RPA services—from consultation to implementation and ongoing support. Our experts work closely with your team to identify automation opportunities that increase productivity, ensure accuracy, and maintain compliance with industry regulations.

BENEFITS OF PARTNERING WITH TÜV RHEINLAND

Expert Support



Boost Efficiency



Compliance & Security



Cost Savings



Scalability



The TÜV Rheinland Advantage

- **Increase Efficiency**

Automate repetitive tasks and minimize human errors.

- **Save on Costs**

Optimize resource allocation and reduce operational overheads.

- **Scalability**

Seamlessly scale operations to meet evolving business demands.

- **Ensure Compliance & Security**

Achieve regulatory compliance with secure, automated solutions.

- **Expert Support**

Benefit from our deep expertise in automation and process optimization.

INDUSTRIES WE SERVE

TÜV Rheinland's RPA solutions are designed to meet the needs of various industries, including:



- **Healthcare Services:**

Systemize patient data management, appointment scheduling, and medical billing.



- **Insurance**

Enhance claims processing, policy administration, and fraud detection.



▪ Manufacturing

Upgrade manufacturing processes with automated quality checks, machine monitoring, and workflow management.



▪ Finance & Accounting

Streamline invoice processing, payroll, and financial reporting.



▪ Human Resources

Automate employee onboarding, benefits administration, and compliance tracking.



▪ Customer Service

Improve response times with automated systems, ticketing, and data management.



▪ Supply Chain Management

Simplify inventory tracking, order processing, and logistics coordination.

OUR IMPLEMENTATION PROCESS

Process Discovery

Identify automation opportunities in your workflows.

Development & Deployment

Design, test, and implement RPA bots tailored to your business.

Monitoring & Optimization

Continuously optimize automated processes for maximum efficiency.

WHY CHOOSE TÜV RHEINLAND FOR YOUR RPA NEEDS?

▪ Global Expertise

Renowned worldwide for delivering advanced technology solutions.

▪ Tailored Services

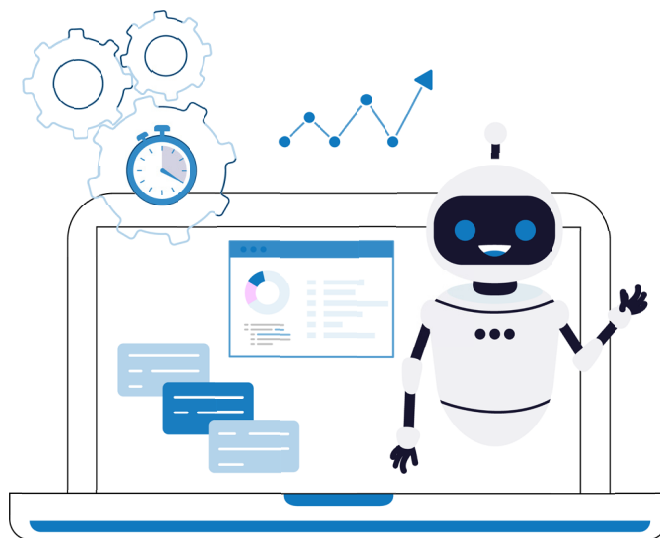
RPA strategies that align with your unique business goals.

▪ Comprehensive Support

From initial consultation to full implementation and beyond.

▪ Proven Success:

A history of delivering successful RPA solutions across diverse industries.



TRANSFORM YOUR BUSINESS WITH RPA TODAY!

Contact us now to learn how TÜV Rheinland can help automate and optimize your business processes. Let's guide you towards operational excellence.